

| | | | | | | |
|-----------------|------------------|----------------------------------|-----------------|----------------------|-------------|---|
| 设计 DESIGN | 汤明枝 2015.7.30 | 图纸名称 PART NAME | | | | 图号/物料编码 PART NO. |
| 校对 CO. BY | | Belling BCF200 (CE-BD198-TS) 说明书 | | | | |
| 标准化 STANDARD | | | | | | 材料 MATERIAL |
| 业务 seller | 陈路 | 图样标记 REL | 版本号 REV. NO. | 重量(g) WEIGHT | 比例 scale | 80g双胶纸 |
| 批准 AUTHORIZE | | | 0 | | | 美的冰箱事业部 MIDEA REFRIGERATION DIVISION |
| | | 共 页 TOTAL SHEETS | | 第 页 NO. OF SHEETS | | |

技术要求

- 1、尺寸：32K
- 2、印刷颜色：单色
- 3、制件必须满足QMB-J53.005 标贴件技术规范；
- 4、符合美的冰箱事业的最新版《QMB-GC08.007 有害物质管理规定》的限值要求。
- 5、产品需经过封样合格后方可进行批量生产。

| 标记 MARKER | 变更内容 | 修改日期 | 签名 |
|--------------|------|------|----|
| ① | | | |
| ② | | | |
| ③ | | | |
| ④ | | | |
| ⑤ | | | |



Instruction Manual

Chest Freezer

MODEL: BCF200

CONTENTS




| | |
|---|---|
| ■ Safety warnings | |
| Meaning of safety warning symbols | 2 |
| Related warnings for use | 2 |
| Electricity related warnings | 2 |
| Warnings related to placing items | 3 |
| Warnings related to disposal | 3 |
| ■ Proper use of freezers | |
| Names of components | 4 |
| placement | 5 |
| Start | 5 |
| ■ Maintenance of freezers | |
| Cleaning | 6 |
| Defrost | 6 |
| Stop using | 6 |
| ■ Frequently asked questionst | |

DEAR CUSTOMER:

Thank you for buying this freezer. To ensure that you get the best results from your new freezer, please take time to read through the simple instructions in this booklet. Please ensure that the packing material is disposed of in accordance with the current environmental requirements. When disposing of any freezer equipment please contact your local waste disposal department for advice on safe disposal. This appliance must be only used for its intended purpose.

Safety warnings

Meaning of safety warning symbols

| | |
|---|---|
|  | The symbols indicate prohibited matters, and those behaviors are forbidden. Non-compliance with the instructions may result in product damages or endanger the personal safety of users. |
| Prohibition symbols | |
|  | The symbols indicate matters that must be followed, and those behaviors must be strictly executed in line with the operation requirements. Non-compliance with the instructions may result in product damages or endanger the personal safety of users. |
| Warning symbols | |
|  | The symbols indicate matters to pay attention to, and these behaviors shall be specially noted. Due precautions are needed or minor or moderate injuries or damages of the product will be caused. |
| Note symbols | |

CAUTION :

The appliance is not intended for use by young children or infirm persons without supervision.

Young children should be supervised to ensure that they do not play with the appliance.

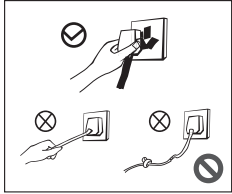
GENERAL:

This type of refrigerator-freezer is widely used in places such as hotels ,offices, student dormitories and houses. It is mostly suitable for refrigerating and preserving foods such as fruits and beverage. It enjoys the advantages of small size, Lightweight, Low electric consumption and easy use.

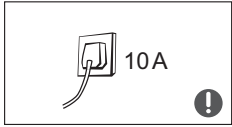
This manual contains lots of important safety information which shall be observed by the users.

Safety warnings

► Electricity related warnings



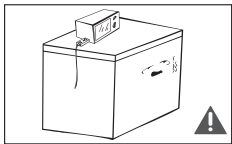
- Do not pull the power cord when pulling the power plug of the freezer. Please firmly grasp the plug and pull out it from the socket directly.
- Do not damage the power cord under any condition so as to ensure safety use, do not use when the power cord is damaged or the plug is worn.
- Worn or damaged power cord shall be replaced in manufacture-authorized maintenance stations.



- Please use a dedicated three-hole power socket which is 10A or more and the power socket shall not be shared with other electrical appliances.
- The power cord should be firmly contacted with the socket or else fires might be caused. Please ensure that the grounding electrode of the power socket is equipped with a reliable grounding line.

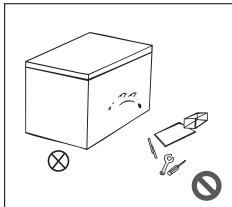


- The refrigerator adopts 220~240V/50Hz AC power, voltage fluctuations over the range of 220~240V±10% will cause malfunction or even damage, so a 750 W automatic voltage regulator must be installed in concert with the AC power.
- Please turn off the valve of the leaking gas and then open the doors and windows in case of leakage of gas and other flammable gases. Do not unplug the refrigerator and other electrical appliances considering that spark may cause a fire.

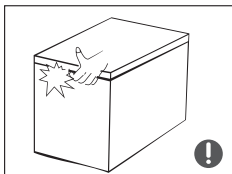


- To ensure safety, it is not recommended that to place regulators, rice cookers, microwave ovens and other appliances at the top of the freezer, those recommended by the manufacture are not included. Do not use electrical appliances in the food pantry.

► Related warnings for use

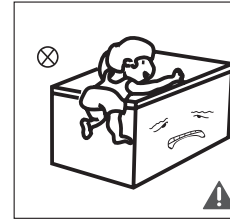


- Authorized demolition or renovation of the refrigerator is not prohibited. It is forbidden to damage the refrigerant lines and the repair and maintenance of the refrigerator must be carried out by professionals.
- Damaged power cord must be replaced by the manufacturer, its maintenance department or related professionals in order to avoid danger.

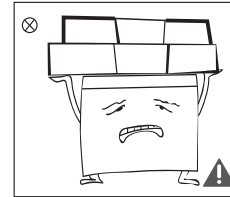


- The surrounding of the appliances around or the embedded structure shall not be obstructed while good ventilation shall be maintained.
- The gaps between freezer doors and between doors and freezer body are small, be noted not to put your hand in these areas to prevent squeezing the finger. Please be gentle when switching off the freezer door to avoid falling articles.
- Do not pick foods or containers in the freezing chamber when the refrigerator is running, especially metal containers in order to avoid frostbite.

Safety warnings

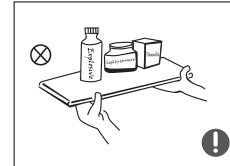


- Do not allow children to enter or climb the freezer to prevent that children are sealed in the freezer or children are injured by the falling freezer.
- Do not spray or wash the freezer; do not put the freezer in moist places easy to be splashed with water so as not to affect the electrical insulation properties of the freezer.

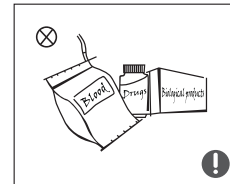


- Do not place heavy objects on the top of the freezer considering that objectives may fall when switching the door, and accidental injuries might be caused.
- Please pull of the plug in case of power failure or cleaning. Do not connect the freezer to power supply within five minutes to prevent damages to the compressor due to successive starts.

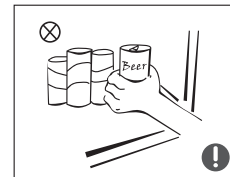
► Warnings related to placing items



- Do not put flammable, explosive, volatile and highly corrosive items in the freezer to prevent damages to the product or fire accidents.
- Do not place flammable items near the freezer to avoid fires.



- This product is household freezers and shall be only suitable for the storage of foods. According to national standards, household freezers shall not be used for other purposes, such as storage of blood, drugs or biological products.



- Do not place items such as bottled or sealed container of fluid such as bottled beers and beverages in the freezer to prevent bursts and other losses.

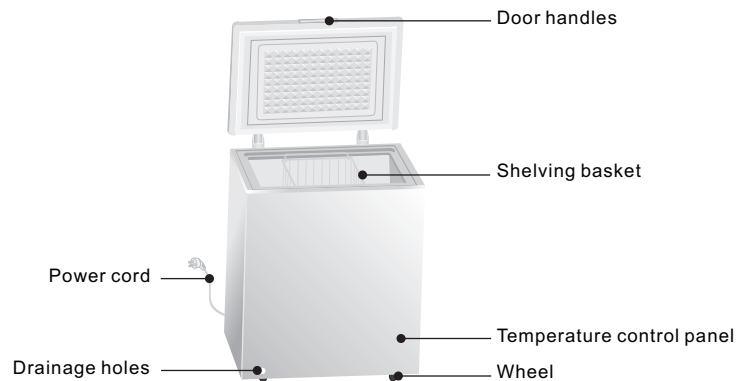
► Warnings related to disposal

The freezer's R600a refrigerant and cyclopentane foam materials are combustible materials and discarded refrigerators should be isolated from fire sources and can not be burned. Please transfer the freezer to qualified professional recycling companies for processing to avoid damages to the environment or other hazards.

Please remove the door of the freezer and shelves which shall be properly placed to avoid accidents of children entering and playing in the freezer.

Proper use of freezers

► Names of components



- The low temperature of freezer may keep food fresh for a long time and it is mainly used to store frozen foods and making ice.
- The freezer is suitable for storage of meat, fish, shrimp, dumplings, rice balls and other foods not to be consumed in short term.
- Chunks of meat are preferably to be divided into small pieces for easy access. Please be noted food shall be consumed within the shelf time.

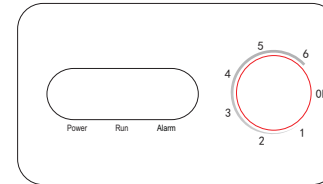
The features and accessories of the freezer you bought may be not entirely consistent with the legend, please refer to the packing list.

► Product features

- Reliable properties: the refrigerator adopts branded efficient compressor which has excellent performance and high reliability;
- Foam door structure;
- Built-in mosaic door seals for dustproof which is easy to remove and clean;
- R600a environmentally friendly refrigerant and cyclopentane environmentally friendly blowing agents are used to promote environmental protection.

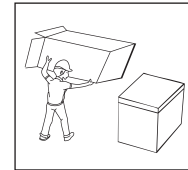
Proper use of freezers

► Temperature Control

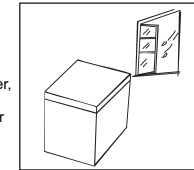


- Connect the freezer to power supply and " Power " indicator will shine. " Run " indicator will shine in operation. " Alarm " indicator will shine when the the temperature inside the chamber is too high.
- The temperature of the chamber is adjusted through the thermostat knob. The number " 1, 2, 3, 4, 5, 6, " do not mean a specific temperatures, the lower the number is, the higher the temperature inside will be and verse versa.
- When the thermostat knob turn to " OFF " ,the freezer will be not inoperation.

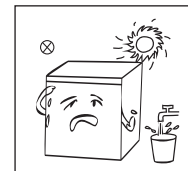
► Placement



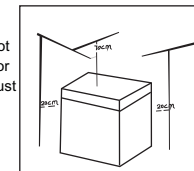
- Before using the freezer, remove all packaging materials including bottom cushions and foam pads and tapes inside the freezer, tear off the protective film on the door and the freezer body.



- The freezer is placed in a well-ventilated indoor place; the ground shall be flat, and sturdy .

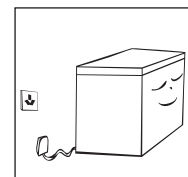


- Keep away from heat and avoid direct sunlight. Do not place the freezer in moist or watery places to prevent rust or reduction of insulating effect.



- The top space of the freezer shall be greater than 70cm, and the distances from both sides and backside shall be more than 20cm to facilitate the opening and closing and heat dissipation.
- Wipe the freezer inside and outside with warm moist rag (add a small amount of detergent in the warm water and wipe clean finally with clean water).

► Start



- The freezer shall stay for half an hour before connecting 220~240V/50Hz power when it is firstly started.
- The freezer shall run 2 to 3 hours before loading fresh or frozen foods; the freezer shall run for more than 4 hours in summer in advance considering that the ambient temperature is high.

Maintenance of freezers

► Cleaning

- Dusts behind the freezer and on the ground shall be timely cleaned to improve the cooling effect and energy saving. The interior of the freezer should be cleaned regularly to avoid odor. Soft towels or sponge dipped in water and non-corrosive neutral detergents are suggested for cleaning. The freezer of shall be finally cleaned with clean water and dry cloth. Open the door for natural drying before the power is turned on.



- Do not use hard brushes, clean steel balls, wire brushes, abrasives, such as toothpastes, organic solvents (such as alcohol, acetone, banana oil, etc.), boiling water, acid or alkaline items clean refrigerator considering that this may damage the fridge surface and interior.
- Do not rinse with water so as not to affect the electrical insulation properties. Please use a dry cloth when cleaning temperature control knob and electrical components.

⚠ Please unplug the freezer for defrost and cleaning.

► Defrost

- Freezer shall be manually defrosted.
Unplug the freezer and open the freezer door, remove foods and drawers before defrosting; Open the outflow holes and drainage holes (and place water container at the outflow holes); indoor frost will naturally melt, wipe the defrost water with a dry, soft cloth. When the frost softens, an ice scraper might be used to the accelerate de-icing process.
- Please remove the food and put in a cool place when defrosting before removing accessories.

Other mechanical devices or other means shall not be used to accelerate except those recommended by the manufacturer. Do not damage the refrigerant circuit.

► Stop using

Foods can be preserved for a couple of hours even in summer in case of power failure; it is recommended to reduce the frequency of opening door and do not put fresh foods into the freezer.
Please unplug the freezer left unused for a long time for cleaning. Keep the door open to avoid the bad odor.
Do not turn upside, horizontally place or vibrate the refrigerator, the carrying angle can not be greater than 45°. Please hold the door and hinge when moving.

⚠ Continuous operation is recommended when the freezer is started. Please do not move the freezer under normal circumstances so as not to affect the freezer's service life.

Frequently asked questions

- The following simple issues can be handled by the user. Please call the after-sale service department if the issues are not settled.

| | |
|--|---|
| Inoperation | Whether the freezer is plugged and connected to power; Low voltage; Whether temperature control knob is in the work area Failure power or tripping circuit |
| Odor | Odorous foods should closely wrapped; Whether foods are rotten; Whether the interior shall be cleaned. |
| Long-term operation of compressor | It is normal that freezer operates for longer time in summer when the ambient temperature is higher; Do not put too much food in the freezer at one time; Do not put foods until they are cooled; Frequent opening of freezer door. Thick frost layer (defrost is needed) |
| Illuminating light does not shine | Whether the freezer is connected to power, whether the indicator light is damaged. |
| The freezer door can not be properly closed. | The freezer door is stuck by food packages; Too much food; Tilt freezer. |
| Loud noises | Whether the food is leveled, whether the freezer is balanced; Whether the freezer parts are properly placed. |
| Transient difficulty in door opening | After refrigeration, there will be pressure difference between the inside and outside of the refrigerator to result in transient difficulty in door opening. This is a normal physical phenomenon. |

Warm tips:

- ◆ The freezer enclosure may emit heat during operation specially in summer, this is caused by the radiation of the condenser, and it is a normal phenomenon.
- ◆ Condensation: condensation phenomenon will be detected on the exterior surface and door seals of the freezer when the ambient humidity is large, this is a normal phenomenon, and the condensation can be wiped away with a dry towel.
- ◆ Airflow sound: Refrigerants circulating in the refrigerant lines will produce eruption of sound and grunts which is normal does not affect the cooling effect.
- ◆ Buzz: Buzz will be generated by running compressor specially when starting up or shutting down.
- ◆ Clatter: The solenoid valve or electric switch valve will clatter which is a normal phenomenon and does not affect the operation.