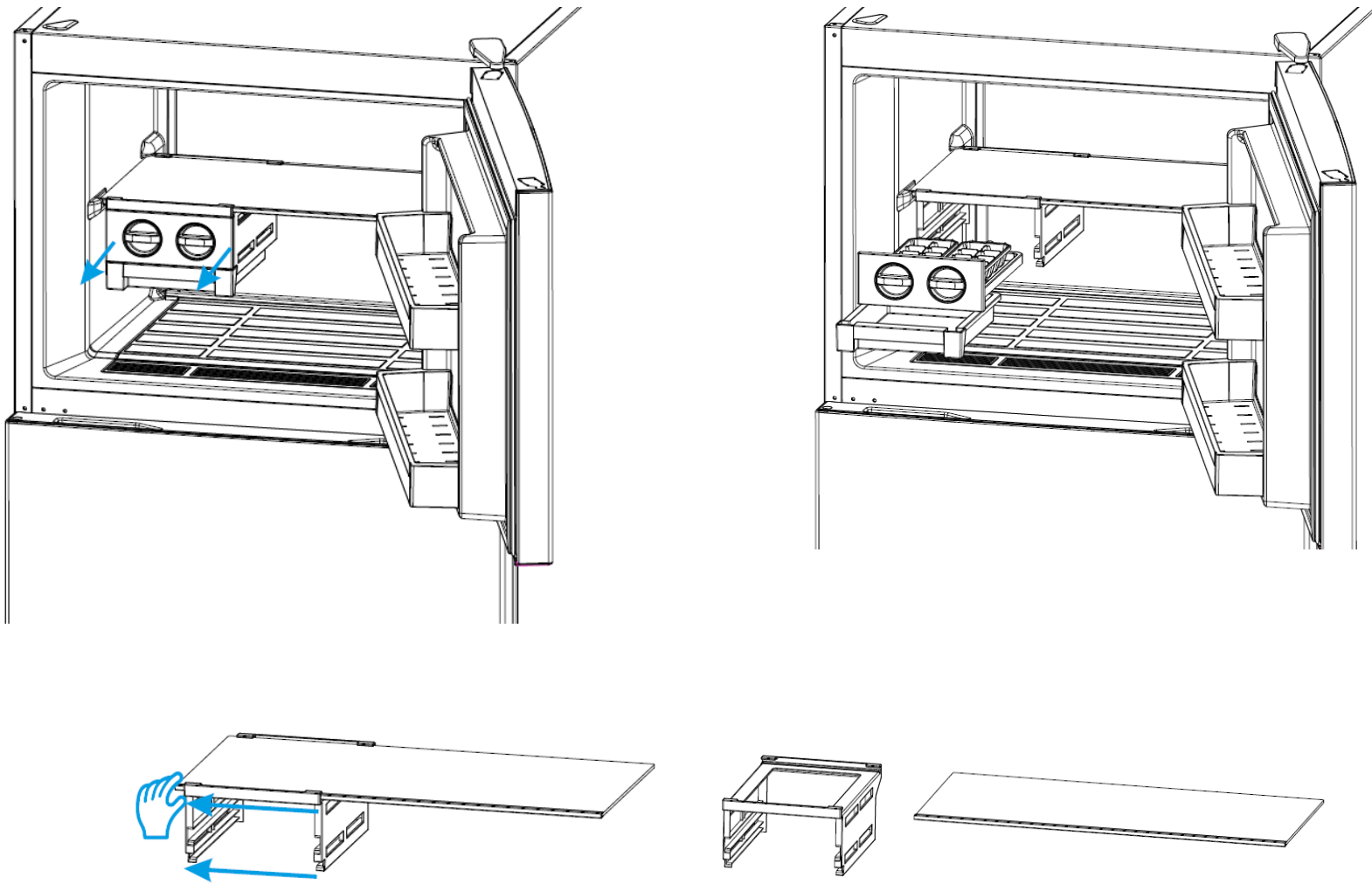


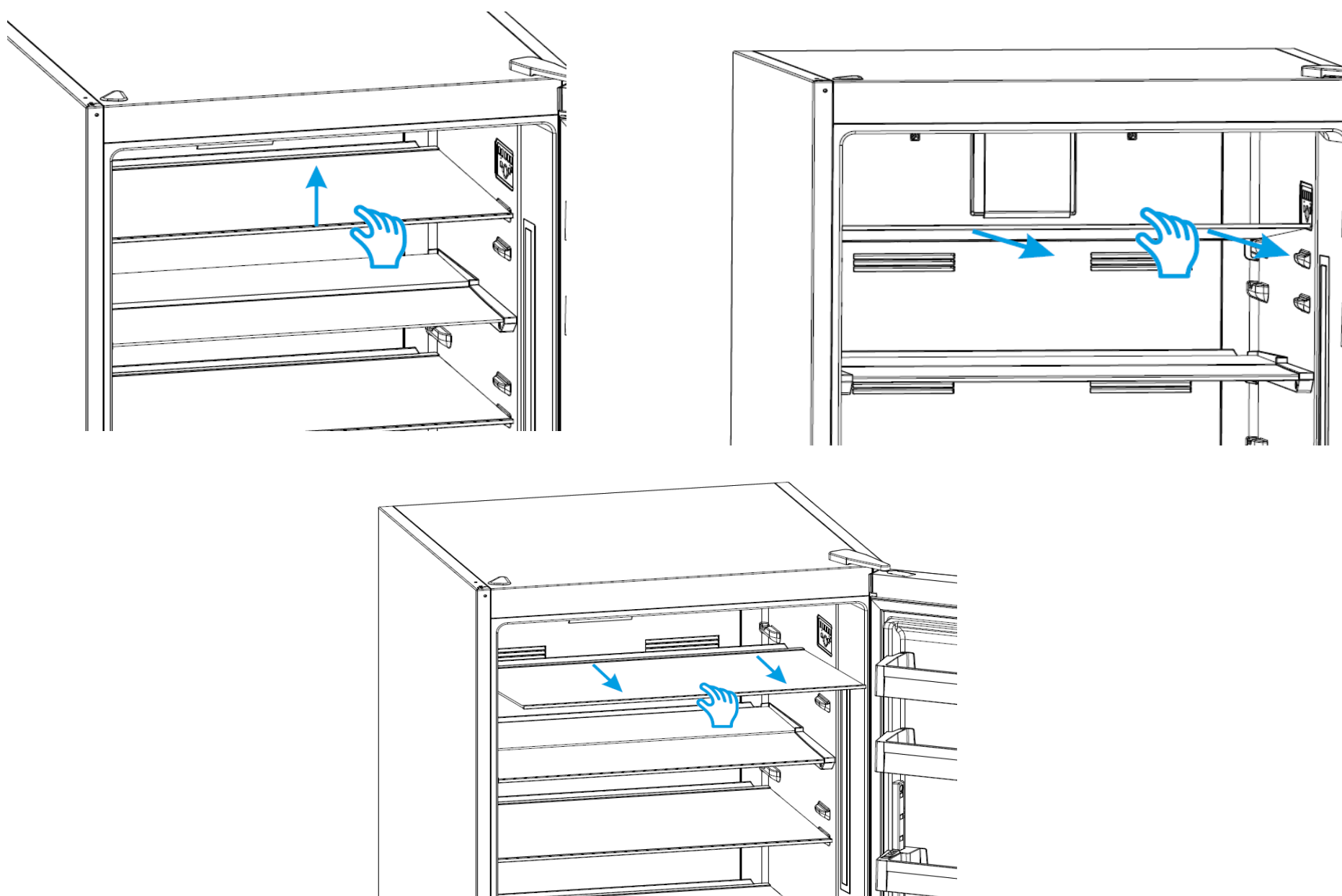
1. ICE MAKER CHANGE

First pull out ice trays and ice holder. Then remove glass shelf from place. Finally you can remove icemaker frame part by sliding it through the glass.



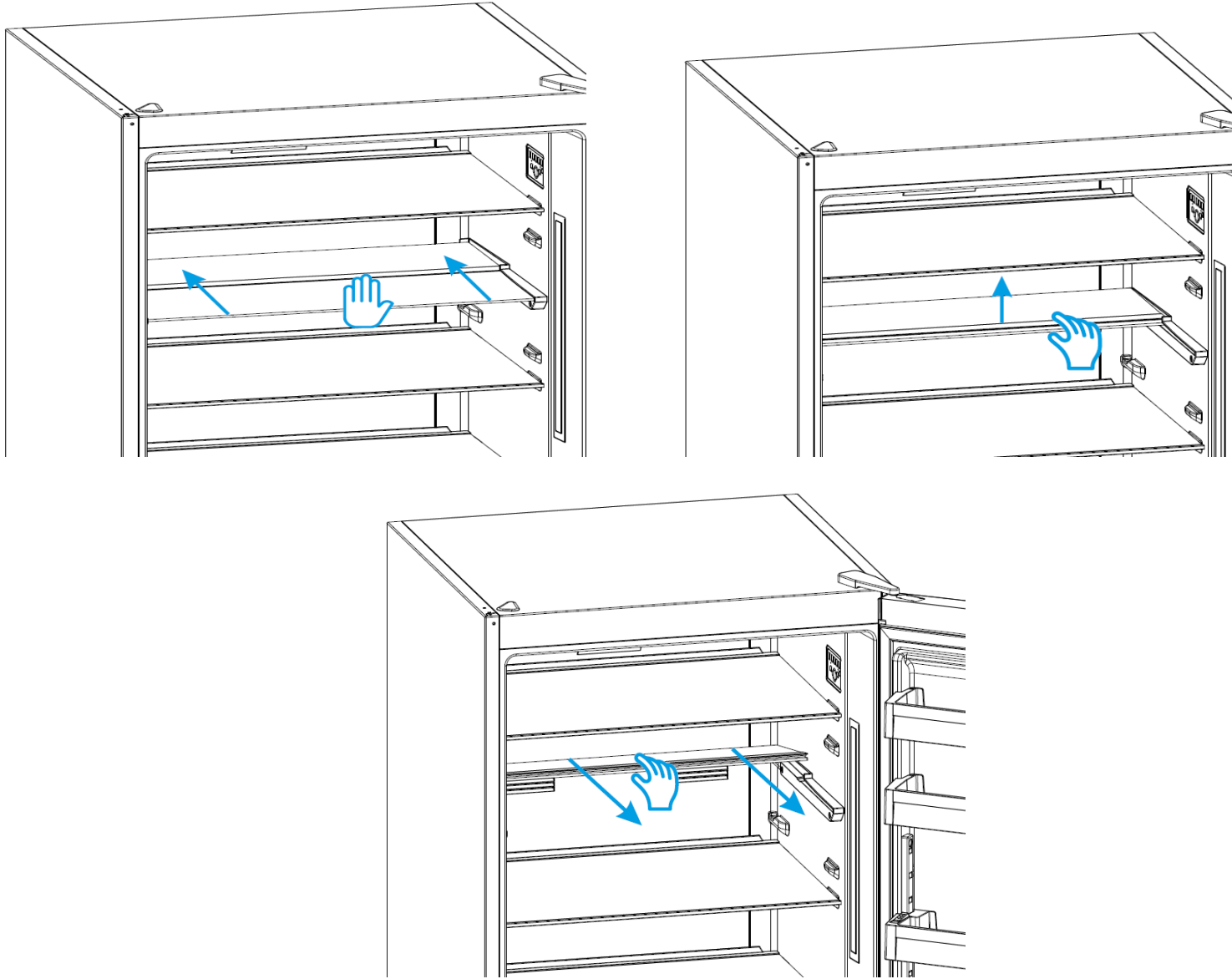
2. GLASS SHELF CHANGE

First gently lift the front side of glass up. Then you can pull the glass out by directly pulling towards yourself.



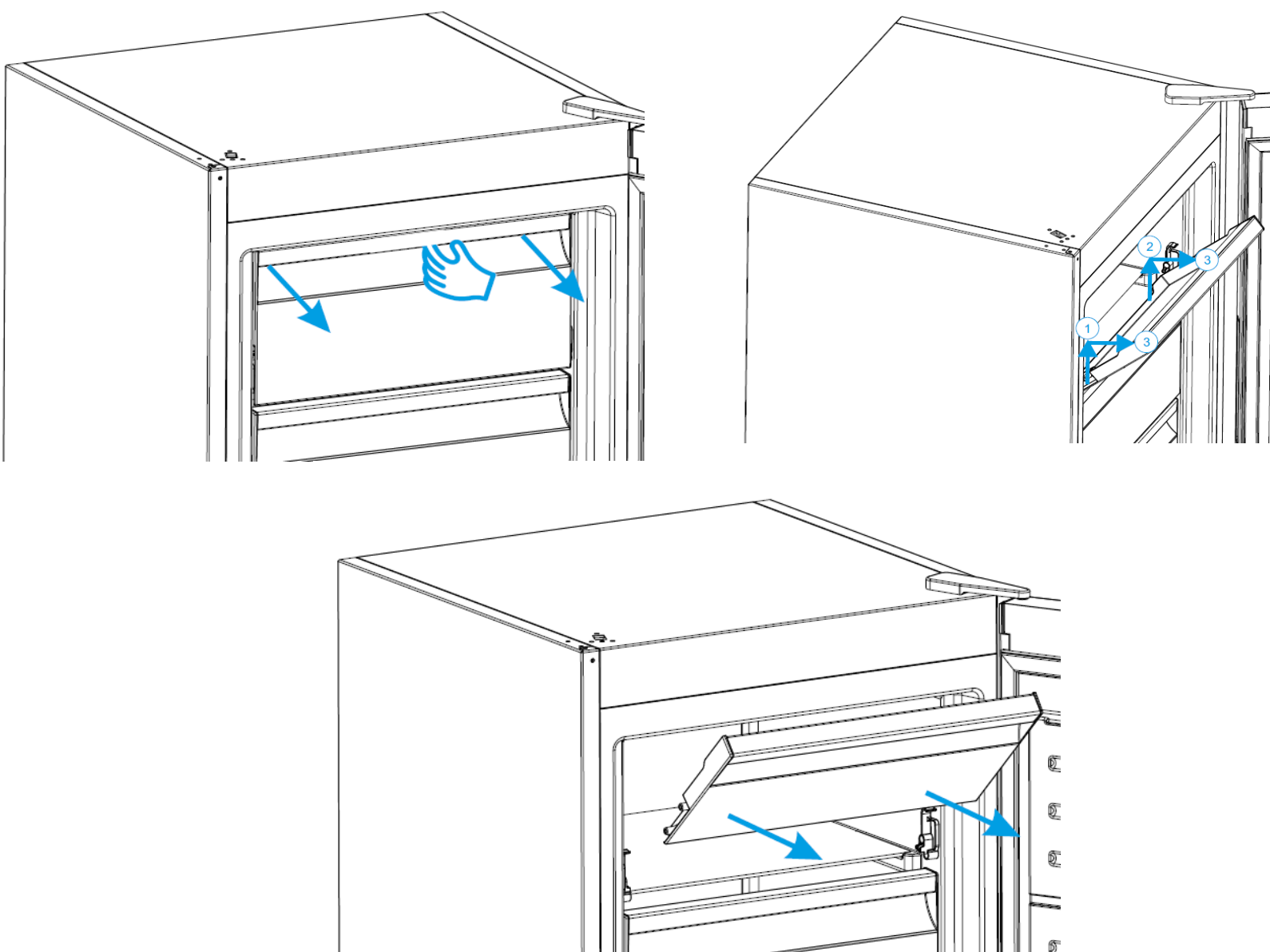
3. FOLDABLE GLASS SHELF CHANGE

First push the glass in front to all the way back. Then gently lift both glasses up together. Now you can pull glasses out by directly pulling towards yourself.



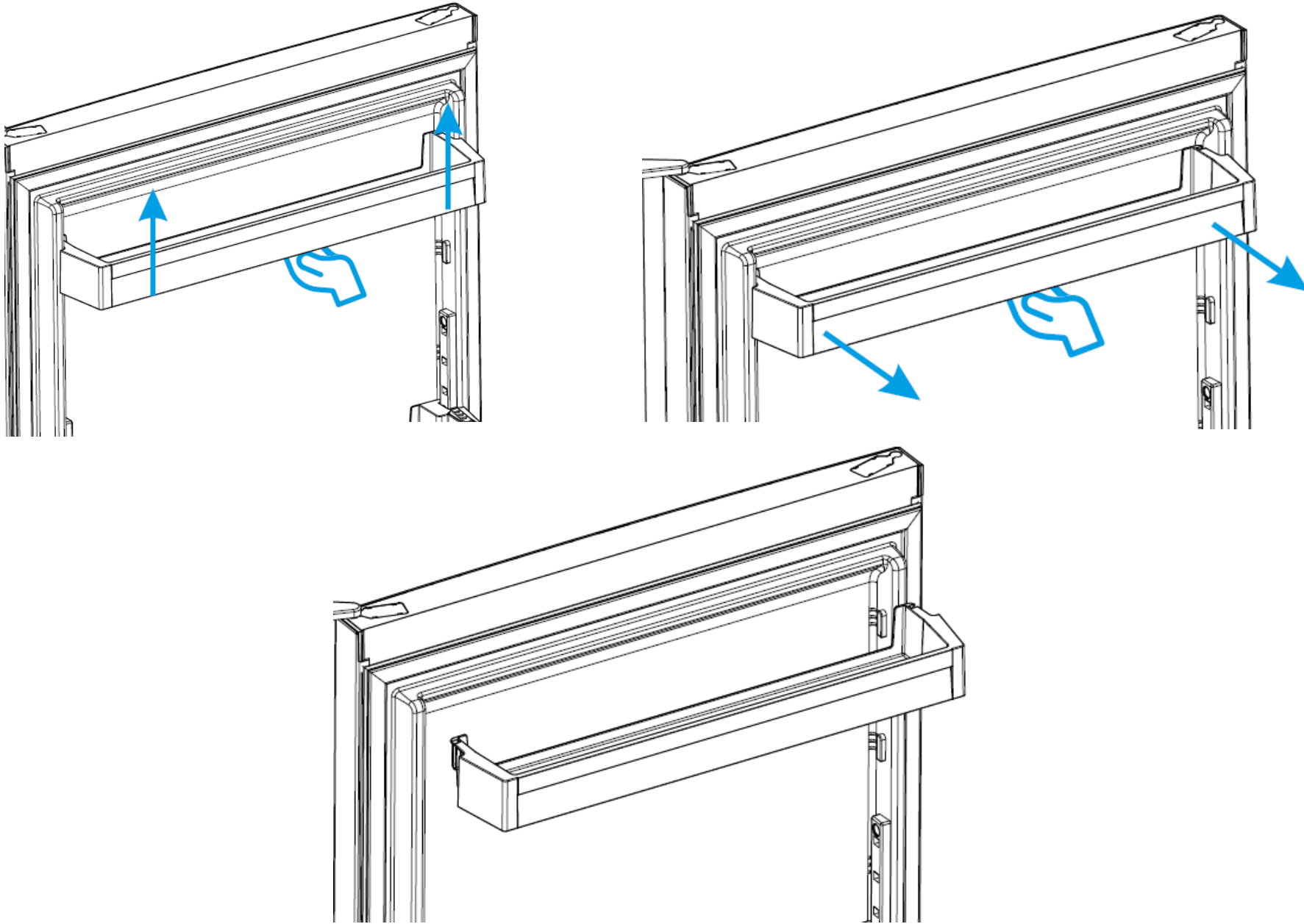
4. FLAP COVER CHANGE

First open the flap slightly, now push the flap up from its bottom edge, focusing on only one side. When the flap is freed from this side, repeat same operation for the other side.



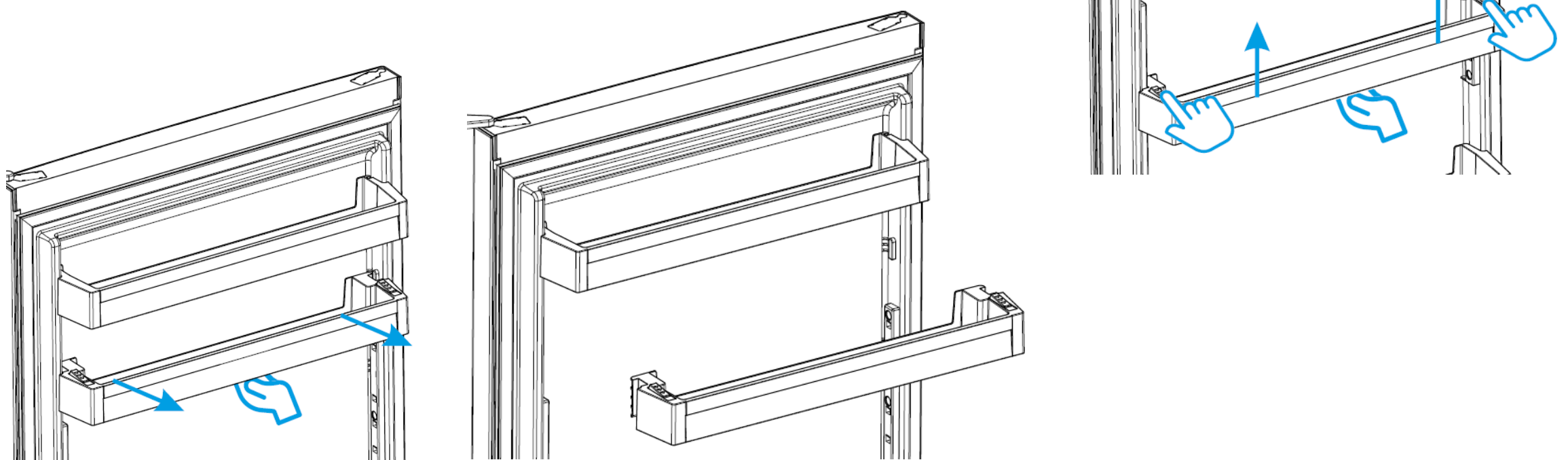
5. DOOR SHELF CHANGE

Gently pull the shelf up using both hands, without bending or twisting the shelf. When shelf is free from assembly details on right and left side, you can take the shelf out by pulling to yourself.



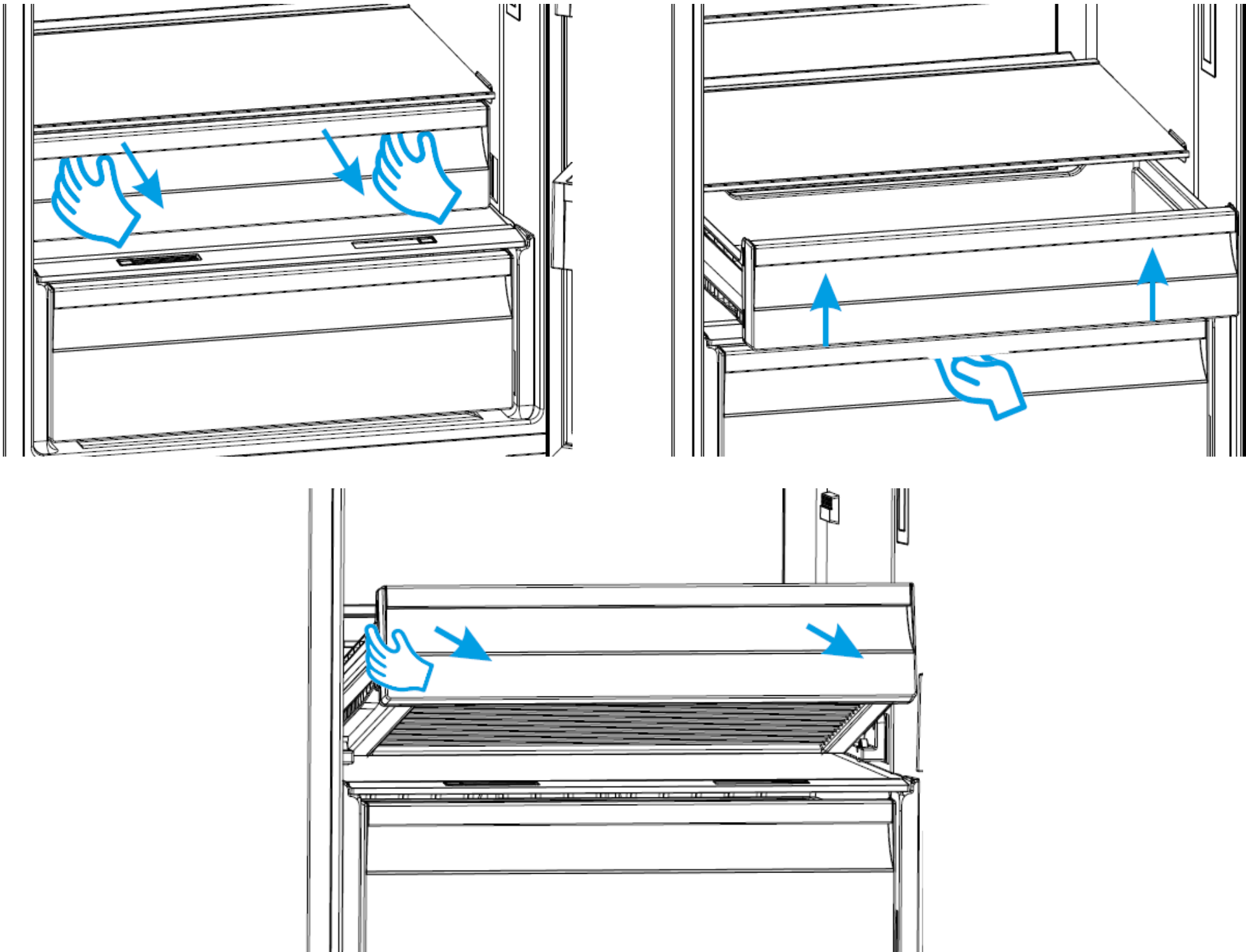
6. ADJUSTABLE DOOR SHELF CHANGE

First grip the door shelf by both hands, at the same time using your thumbs, pull latches on sides towards yourself. This will unlock the mechanism, so you can lift the shelf all the way up and free the shelf from its guides on the door.



7. BASKET-CHILLER-CRISPER CHANGE

First pull the basket out until it reaches end position,
Then gently pull front side up until frees from its guides on the sides.
Finally continue pulling it out and remove it from place.



8. MAXIFRESH CHANGE

